


BOND UPDATE

July 2023

#ThankYouVoters

The background of the image features several wooden blocks of varying sizes and shapes, some with intricate carvings. One prominent block in the foreground has the word 'UNIVERSITY' carved into it, accompanied by a crest or logo. Other blocks show different patterns, including wavy lines and geometric shapes. The entire scene is overlaid with a semi-transparent reddish-brown filter.

2019 BOND CONSTRUCTION UPDATE

- **Waller Junior High Renovations and Additions**
 - Two-story addition is on schedule for August 2023 opening.
 - Furniture delivery scheduled in July.
- **Holleman Elementary Renovations**
 - New emergency generator remains on order for fall 2023 installation.
- **Priority 1 Projects**
 - Chillers, HVAC, and Generators for Field Store and Technology plans and specifications are being finalized for bidding.

An architectural rendering of a modern school building, Waller Junior High. The building features a large glass entrance with a flat roof supported by several dark, angled columns. To the left, there's a section with horizontal siding and windows. To the right, large letters 'W J H' are visible on the wall. An American flag flies on the left. People are shown walking around the entrance, and cars are parked in the foreground. The entire image has a reddish-orange tint.

WALLER JUNIOR HIGH

PHASE 1 COMPLETION SUMMER 2023
PHASE 2 COMPLETION SUMMER 2024

WALLER JUNIOR HIGH

- MEP trim out is 98% complete throughout the Phase 1 addition.
- Mechanical Testing & Balance and Commissioning are in progress.
- Above ceiling deficiencies are 99% complete and, tile cover up is 90% complete.
- Final wall paint continues throughout the Phase 1 addition.
- Hallway and stair laminate flooring is 95% complete. Classrooms are complete.
- Gym Bleachers are installed and floor sealed. Line paint and final seal in July.
- Exterior cafeteria soffit panels are 75% complete.
- West Campus asbestos abatement complete.
- Demolition on West campus has started.
- Contractor has started final cleaning of classrooms, and initial cleaning of corridors.
- Teacher's boxes are moved into their new classrooms.
- Technology and furniture deliveries and installation are scheduled to start July 10th.

WALLER JUNIOR HIGH



NORTH ELEVATION OF ADDITION

WALLER JUNIOR HIGH



CAFETERIA COURTYARD



CAFETERIA AND SERVING LINES



MEDIA CENTER



WALLER JUNIOR HIGH



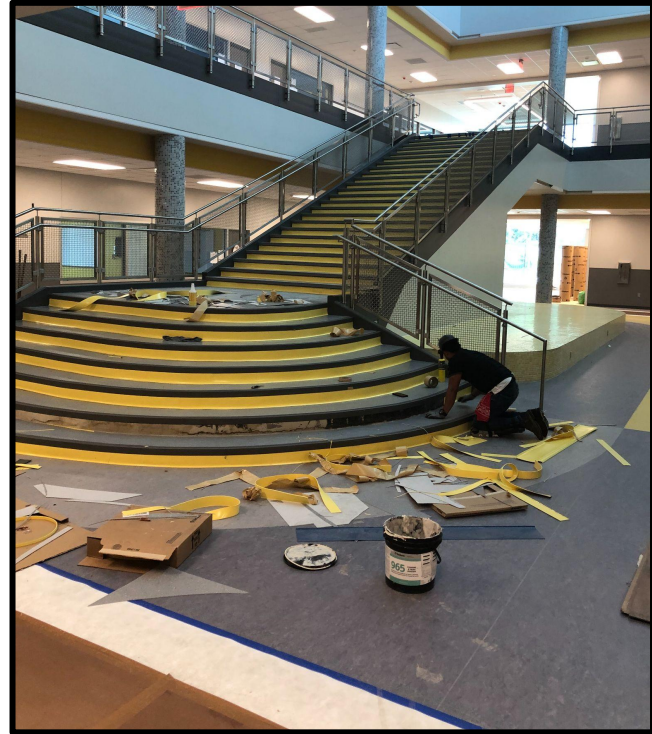
MAIN HALLWAY AND STAIRWAY



CENTRAL STAIRWAY



BLUE AND YELLOW STAIRS





CLASSROOM WITH TEACHER BOXES
AND FURNITURE PLAN





RESTROOM FIXTURES

WALLER JUNIOR HIGH

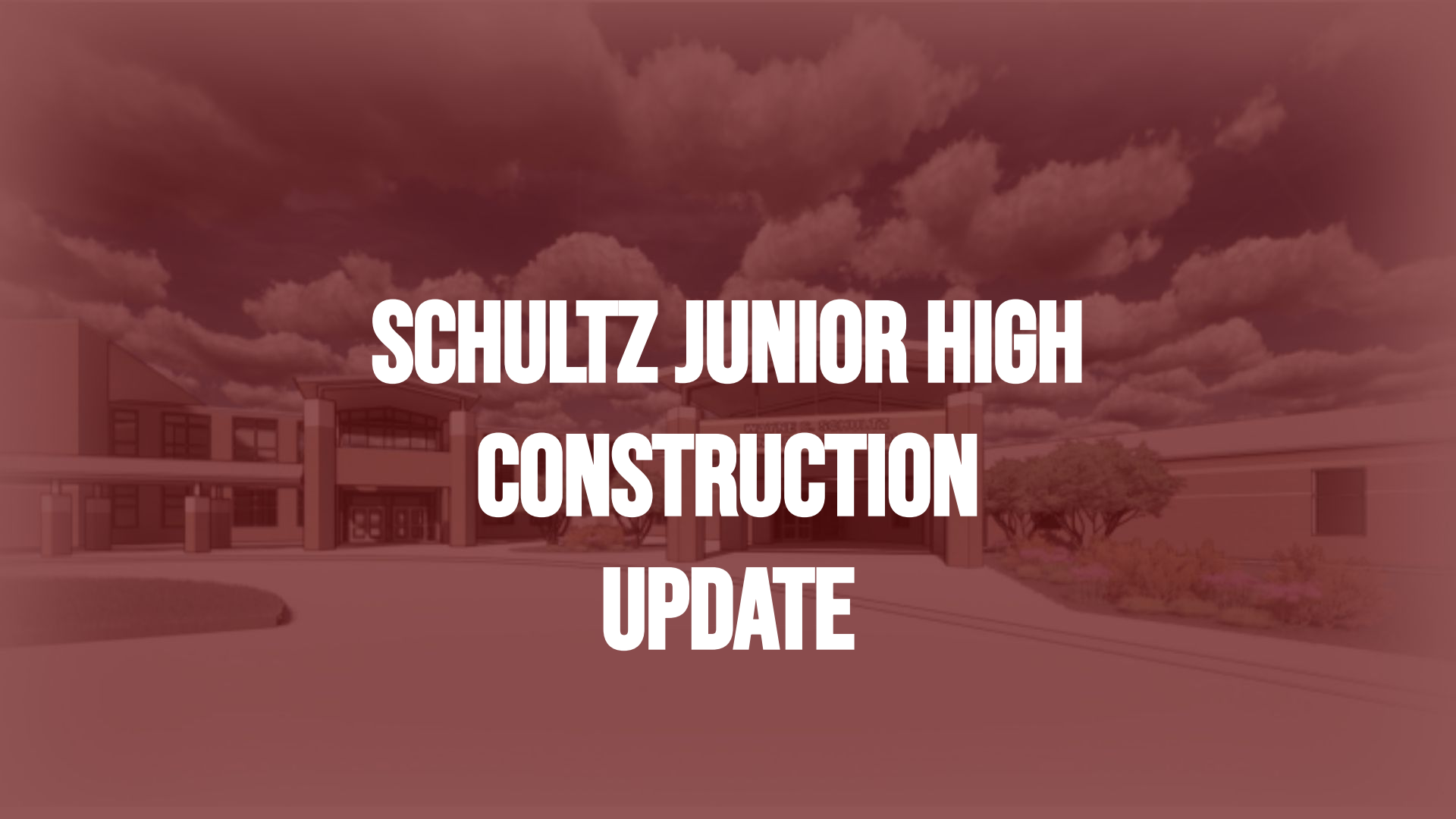


WALL GRAPHICS

WALLER ISD
CONSTRUCTION



AUX STADIUM BLEACHER REMOVAL

The background image is a photograph of a modern school building, identified by the text as Schultz Junior High. The building features a central entrance with a covered walkway supported by columns. There are large windows and a flat roof. The sky is filled with large, white, fluffy clouds. The entire image is overlaid with a semi-transparent reddish-brown filter. The text "SCHULTZ JUNIOR HIGH CONSTRUCTION UPDATE" is centered in the image in a large, bold, white, sans-serif font.

SCHULTZ JUNIOR HIGH CONSTRUCTION UPDATE

SCHULTZ JUNIOR HIGH

- Project is Substantially Complete.
- New Entry Canopy and Electronic LED Marquee have been installed.
- Access Control installation is being finalized.
- Additional renovation scope from the 2022 bond has begun.

SCHULTZ JUNIOR HIGH




CANOPY

WALLER ISD
CONSTRUCTION

SCHULTZ JUNIOR HIGH



MARQUEE

An architectural rendering of a modern school building with a long, low profile and a corrugated metal roof. A large American flag flies on a tall pole in front of the building. Several people are walking on the sidewalk and in the parking lot. There are cars parked, including a blue hatchback, a red sedan, and a white pickup truck. The scene is set against a clear sky with some clouds. The entire image has a semi-transparent dark purple overlay.

2022 BOND CONSTRUCTION UPDATE

- **Elementary #6 & #7**
 - Grade Beams are nearly complete and slab pours are commencing.
 - Site Utilities are nearly complete.
 - Underground plumbing & electrical is in progress.
- **Agricultural Science Center and Education Service Center (ESC)**
 - Design development presentation in June and construction documents started.
 - Stewart Builders providing preconstruction services.
 - Construction scheduled to start in Q4 of 2023.
- **Turlington Elementary Priority 1 - Driveway Improvements**
 - Faculty drive demo has completed.
 - New parent drive creation and light pole installation have begun.
 - Construction remains scheduled for August 4th completion.
- **Schultz Junior High Priority 1 - Improvements**
 - Hallway lockers and large gym bleacher set have been removed.
 - Field and Accent painting has been completed.
 - Corridor wainscot and graphics package are on order.
 - New bleacher install & eastern bleacher demo set for October.



SITE AERIAL



UG SITE UTILITIES PROGRESS

WALLER ISD
CONSTRUCTION



UG & GRADEBEAM PROGRESS



SITE AERIAL



Grade Beam Foundations in progress



Subfloor Plumbing in Progress



Parent Drive



CULVERT INSTALLATION

SCHULTZ JUNIOR HIGH



HALLWAY LOCKER REMOVAL & PAINT

WALLER ISD
CONSTRUCTION



LARGE BLEACHER SET REMOVED

WALLER ISD
CONSTRUCTION

A photograph of a classroom filled with children of various ages, from young children to teenagers. They are all expressing excitement, with many having their arms raised in the air. The children are seated at small, light-colored tables with blue chairs. The classroom has white walls, a tiled ceiling, and various educational posters and supplies visible in the background. The entire image is overlaid with a semi-transparent red filter.

#ThankYouVoters

Waller
Independent School District